

Dear Central Dauphin School District Parents, Guardians, and Students:

During the state-mandated closure of schools due to Coronavirus (COVID-19), the Central Dauphin School District will be providing free grab and go breakfast and lunch meals to any resident children aged 18 and under. The District's meal program will be supported through collaboration with the Pennsylvania Department of Education and the National School Lunch Program. Any child, 18 or under, who lives within the boundaries of Central Dauphin School District will be eligible for free breakfast and lunch. The CHILD MUST BE PRESENT in order to receive the meal due to National School Lunch Program reimbursement guidelines. Meals will be given on a first come, first served basis until supplies run out. We will adjust supplies as we are able to gauge the level of community participation in the program.

Who: Any child, 18 or under, who lives within CDSD's boundaries.

What: Free breakfast and lunch – both meals will be given at the same time.

Where: East High School AND Swatara Middle School – choose the location that is most convenient for your family. Maps and directions to the pickup area are located on the district's website.

When: The Grab & Go Meal Service will continue through Thursday, August 20, 2020. Meal Pick Ups are at CD East High School and Swatara Middle School from 8:00 a.m. - Noon. Thursday's pick up will include meals for Friday, Saturday and Sunday.

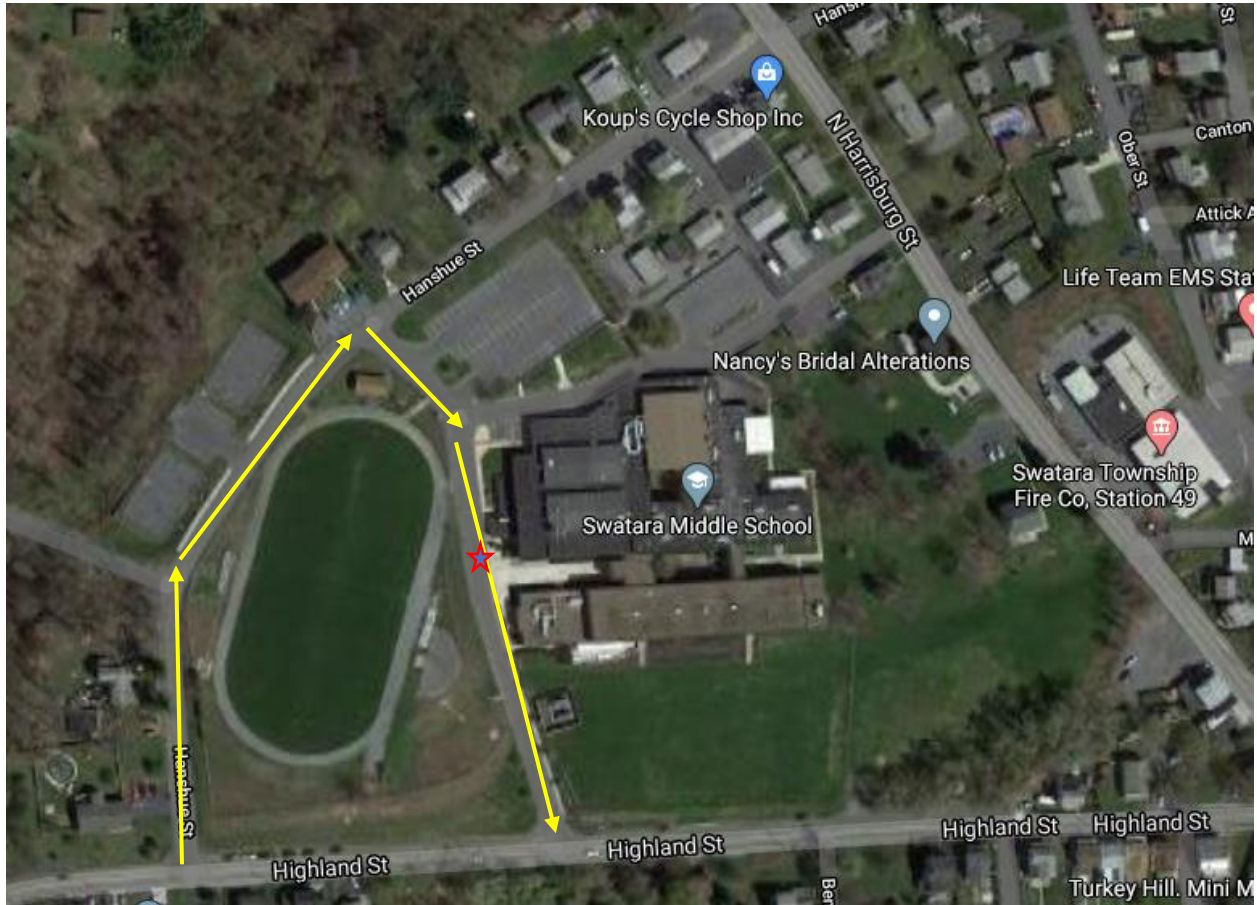
How: Drive-thru service only. Please see accompanying map.

If the United States Department of Education, Governor's Office and/or the Pennsylvania Department of Education provide new program guidance, it could modify and/or change the operations of the food distribution. Any such changes would be communicated through our District website. Thank you for your patience with district officials as we adjust to ever-changing circumstances during this unprecedented time.

Meal Pick Up Directions and Maps Below.

## SWATARA MIDDLE SCHOOL

- All meal pickup traffic will flow from Hanshue Street towards the school.
- Continue down the road between the school and the field.
- Meals will be distributed by the loading dock next to the kitchen. Do not exit your vehicle.
- Exit towards Highland Street



## CD EAST HIGH SCHOOL

- All meal pickup traffic will flow from Rutherford Road to Four Seasons Blvd.
- Continue down Four Seasons Blvd to the cafeteria doors.
- Meals will be distributed from the cafeteria (Red Star). Do not exit your vehicle.
- Continue straight and exit onto Union Deposit Road

